

For 0-6 years old with family

Kokubunji



# Aozora-hiroba

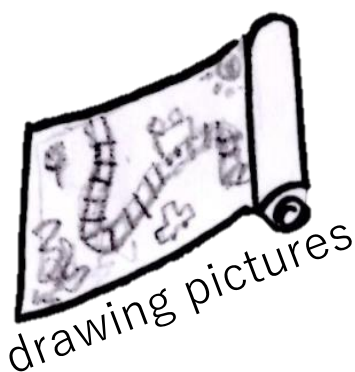
Aozora-hiroba (open air play park) is fun for all ages.  
Aozora-hiroba is the place to find your own space easily  
with family, friends, even you come alone!!



water play

## Let's challenge how to play!!

With natural gifts like Acorns and Pine corns,  
wild flower, small insects and wild birds,  
Let's go find them!!



drawing pictures



sand play

unique handmade  
toys



mud play



collecting  
natural gifts



cardboard box  
train

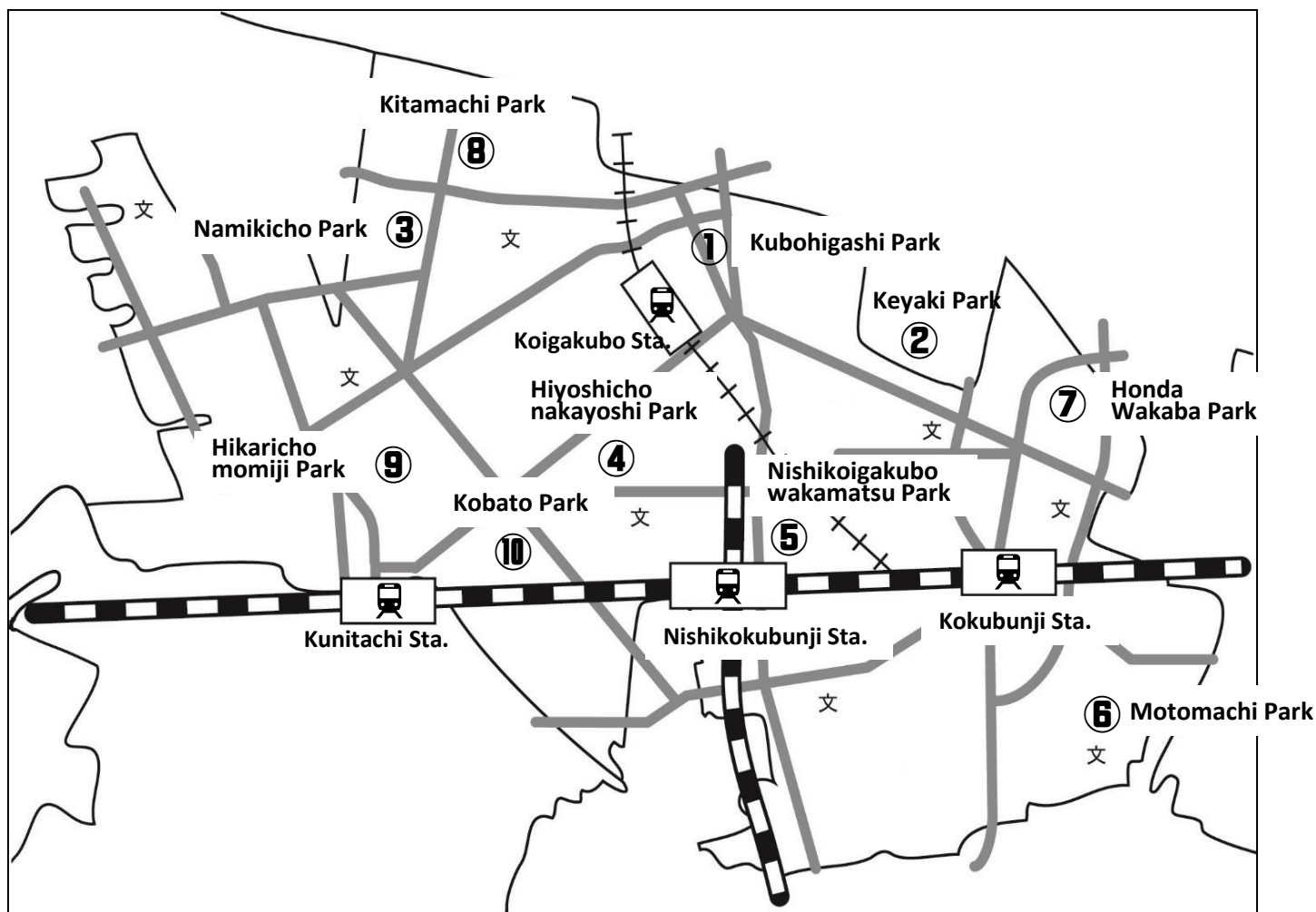


For your parenting  
questions and concerns,  
Midwife comes to each parks  
once a month.

The Adults who are called playleaders watch over so that children can play lively and safety.

We may be closed due to bad weather. (We inform you by HP)

Our holiday is national holiday and during elementary school spring, summer ,winter long vacations.



	Location Parks in Kokubunji	Address	Days of the week	hours	The date which Midwife is in
①	Kubohigashi Park	Higashitokura 2-19-1	Wed.	10:00 ~ 12:00 13:30 ~ 17:00	Third Wed.10:00 ~ 11:00
②	Keyaki Park	Kodaira City jyosuihoncho 6-22-2			Third Wed.11:00 ~ 12:00
③	Namikicho Park	Namikicho 3-2-10			First Wed.10:00 ~ 11:00
④	Hiyoshicho nakayoshi Park	Hiyoshicho 3-10-3			First Wed.11:00 ~ 12:00
⑤	Nishikoigakubo wakamatsu Park	Nishikoigakubo 1-31-7			Second Wed.10:00 ~ 11:00
⑥	Motomachi Park	Higashimotomachi 1-34-3			Second Wed.11:00 ~ 12:00
⑦	Honda Wakaba Park	Honda 5-20-9	Tue.	10:00 ~ 12:00	Third Tue.10:00 ~ 11:00
⑧	Kitamachi Park	Kitamachi 5-24-6			Third Tue.11:00 ~ 12:00
⑨	Hikaricho momiji Park	Hikaricho 1-15-4	Fri.	10:00 ~ 12:00	Second Fri.10:00 ~ 11:00
⑩	Kobato Park	Hiyoshicho 2-8-14			Second Fri.11:00 ~ 12:00